

WHY ?

More than half of the global population resides in **urban areas**, which are foreseen to continue growing to 66% by 2050, mainly due to inflows of internal and international **migrants**. Cities can benefit from these people's **potential** by creating an enabling environment and taking migration into account in their local governance.

WHAT ?

MC2CM contributes to improved **migration governance** at local level in cities in Europe and in the Southern Mediterranean, with a specific focus on **integration and inclusion**, and migrants' access to rights and services.

HOW ?

The project facilitates mainstreaming migration into local planning through a three-fold approach. It nurtures **dialogue**, builds an expert network, supports **knowledge** gain and exchange, and engages in **actions**.

PROJECT DURATION

2015-2018

The network consists of partner cities Amman, Beirut, Lisbon, Lyon, Madrid, Tangier, Tunis, Turin and Vienna. The learnings will be disseminated to a wider network of cities in Europe, Southern Mediterranean region and beyond.

FOR MORE INFORMATION PLEASE CONTACT

E-mail : MC2CM@city-to-city.org

The Mediterranean City-to-City Migration project is implemented in the framework of the Dialogue on Mediterranean Transit Migration (MTM)

Co-funded by the European Union



Co-funded by the
Schweizerische Eidgenossenschaft
Confédération suisse
Confederazione Svizzera
Confederaziun svizra

Swiss Agency for Development
and Cooperation SDC

MC²CM | **supporting
urban migration
governance**



**Nurturing
dialogue**

**Sharing
knowledge**

**Engaging in
action**

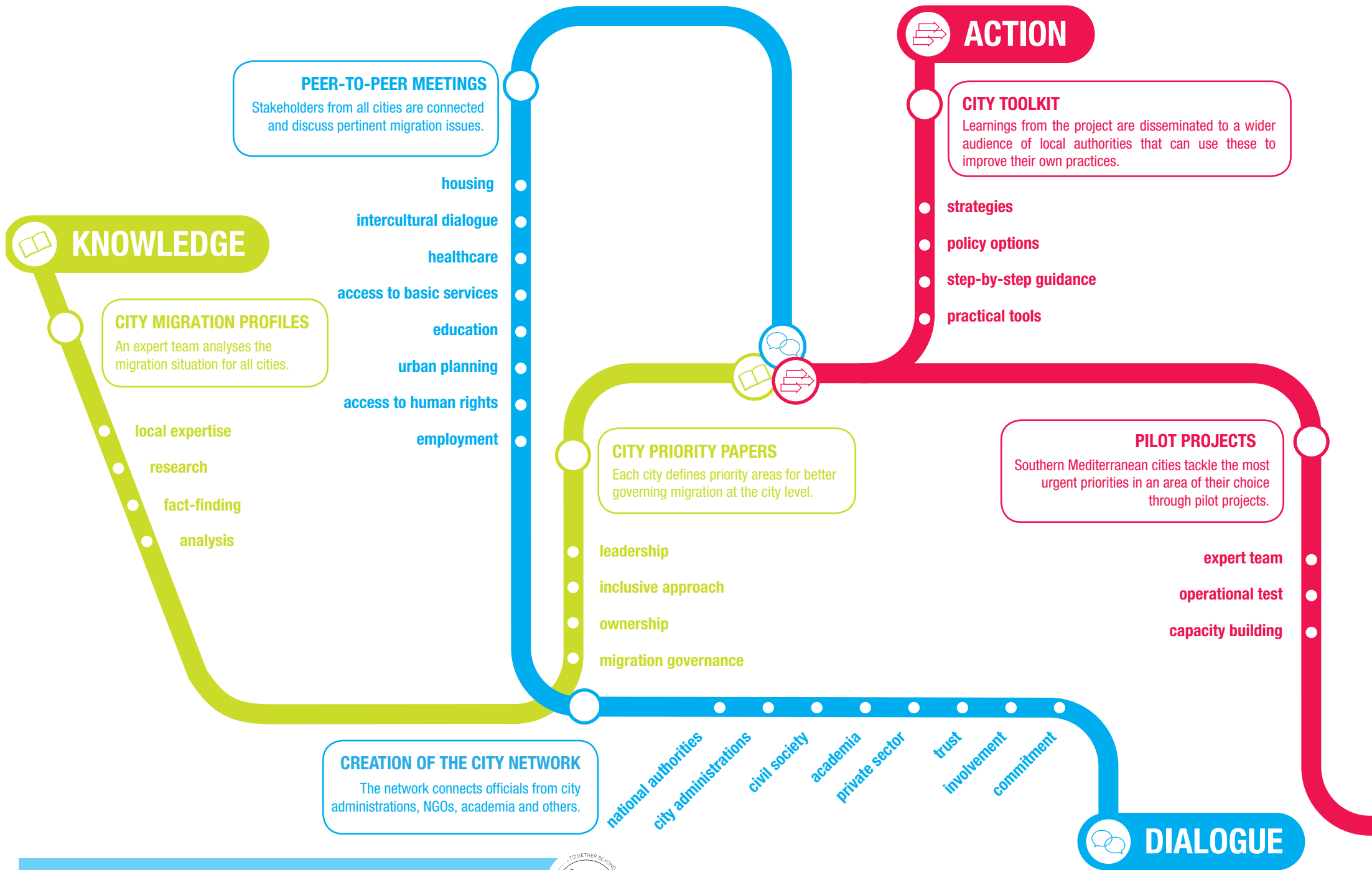
Mediterranean City-to-City Migration (MC2CM)

Implemented by



Associate partner





MC2CM was presented at Habitat III in Quito and will contribute to implementation of the New Urban Agenda

